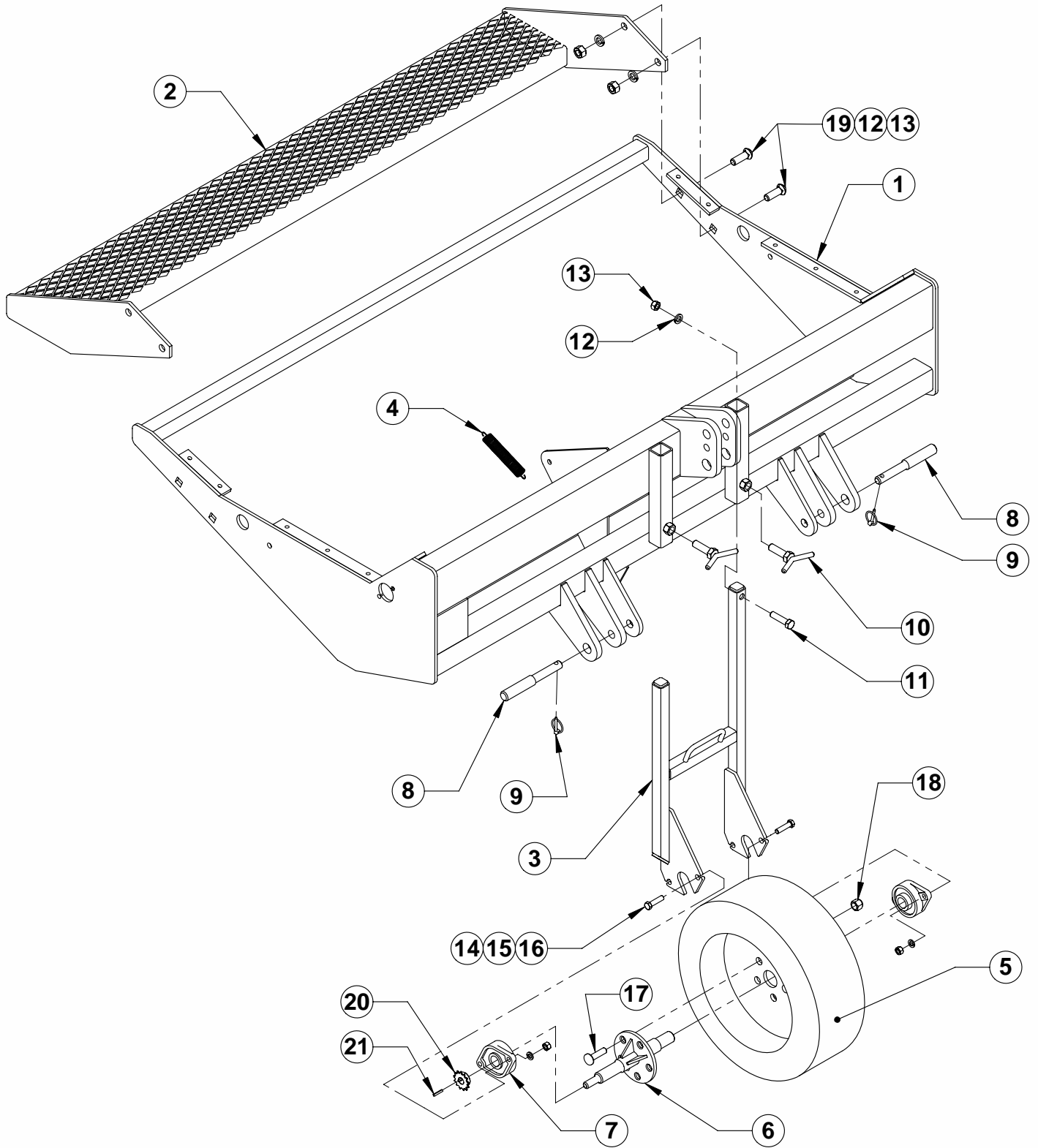


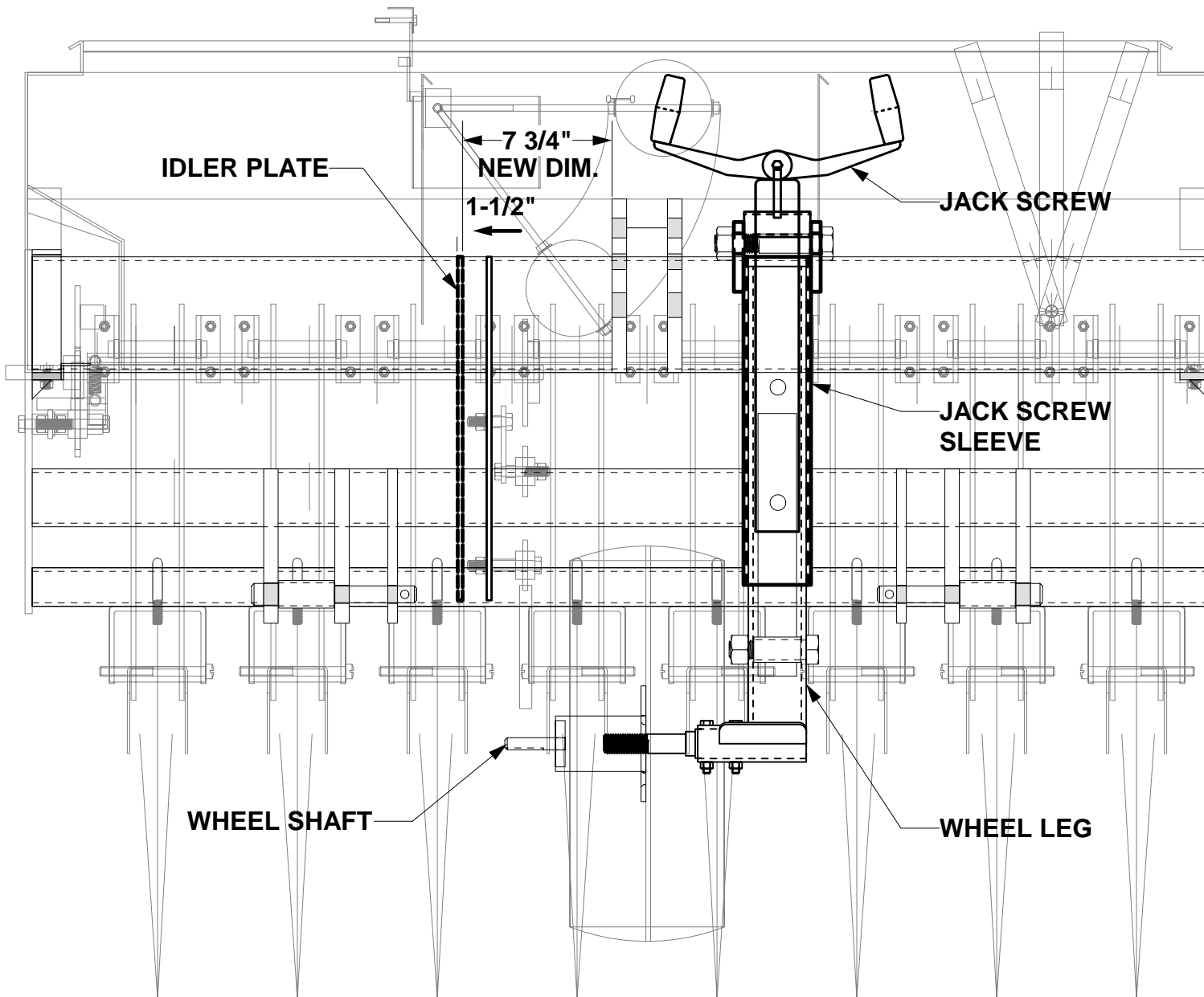
MAIN FRAME, WHEEL FRAME & WALKBOARD ASSEMBLIES



MAIN FRAME, WHEEL FRAME & WALKBOARD ASSEMBLIES

<u>Ref No.</u>	<u>Part No.</u>	<u>Description</u>	<u>Qty</u>
1	VDS-30A000	2-1/2' Main Frame	1
	VDS-36A000	3' Main Frame	1
	VDS-48A000	4' Main Frame	1
	VDS-60A000	5' Main Frame	1
	VDS-72A000	6' Main Frame	1
2	VDS-30H000	2-1/2' Walk Board	1
	VDS-36A000	3' Walk Board	1
	VDS-48A000	4' Walk Board	1
	VDS-60H000	5' Walk Board	1
	VDS-72H000	6' Walk Board	1
3	VDS-00E100	Drive Wheel H-Frame	1
4	GSR-17112T	7" Tension Spring	1
5	GWT-801004	20" x 8" x 10" Tire W/ Wheel	1
6	VDS-00D100	Wheel Shaft	1
7	GBR-20FL01	1-1/4" Flange Bearing	2
8	GPN-18CA12	CAT. 1&2 Pull Pin	2
9	GPN-070LYN	7/16" Lynch Pin	2
10	VDS-00J100	Set Screw Weldment 3/4" x 1-1/2" (Vineyard Drills)	2
	VDS-00J200	Set Screw Weldment 3/4" x 2-1/2"(No-Till Drills)	2
11	CSNC512040	3/4" x 2-1/2" NC Cap Screw	1
12	LWASHER-12	3/4" Lock Washer	5
13	HXNUT-12NC	3/4" NC Hex Nut	5
14	CSNC508028	1/2" x 1-3/4" NC Cap Screw	4
15	LWASHER-08	1/2" Lock Washer	4
16	HXNUT-08NC	1/2" NC Hex Nut	4
17	CSNF508020	1/2" X 1-1/4" NF Cap Screw	5
18	WHN-08NFWN	1/2" Lug Nut	5
19	CBNC512032	3/4" x 2" NC Carriage Bolt	4
20	GSK-12BS13	13 Tooth Sprocket	1
21	VDS-00G010	Sprocket Key	1

VD H-FRAME RETROFIT INSTALLATION DRAWING



1. UNINSTALL AND REMOVE JACK SCREW, WHEEL LEG, WHEEL SHAFT, AND DISASSEMBLE WHEEL FROM THE WHEEL LEG.
2. CUT JACK SCREW SLEEVE AND TOP EARS ON EACH SIDE OF THE SLEEVE OFF OF THE MAIN FRAME.
3. CUT IDLER PLATE OFF OF THE MAIN FRAME AND MOVE IT 1-1/2" AWAY FROM THE CENTER OF THE 3-PT. HITCH. WELD THE IDLER PLATE BACK TO THE MAIN FRAME IN NEW LOCATION (USE NEW IDLER PLATE IF APPLICABLE).
4. SEE NEXT PAGE FOR FURTHER INSTRUCTIONS.

VD H-FRAME RETROFIT INSTALLATION DRAWING

